



**INDEPENDENT
LABORATORY
SUPPLIES**

*Specialists in Mining
Laboratory Solutions*



**CAPABILITY
STATEMENT**



WHO WE ARE

50+ YEARS COMBINED EXPERIENCE IN MINING LABORATORY SUPPLY

Established in 2006, Independent Laboratory Supplies (ILS) is a fully independent supplier of end-to-end laboratory solutions to the mining industry.

From mining consumables, laboratory supplies and mineral processing equipment, through to the design, fit out and commissioning of laboratory units, we are your all-in-one partner for mining assay laboratory solutions.

Strategically located in Australia's mining capital Perth and with partnerships around the globe, we supply over 250 different operations worldwide, ranging from small, isolated exploration sites to large-scale mining operations and full-scale commercial laboratories.

Through our unwavering commitment to our values, we assure a timely and on-budget service underpinned by extensive industry knowledge, which ensures the delivery of the right solutions, every time.

KEY PEOPLE



Martin Saunders
Director



Andrew Bairstow
Director



Stephen Lester
General Manager



Greg Hunter
Technical Services/Project Manager



OUR DIFFERENCE IS OUR CORE VALUES



OUR UNWAVERING COMMITMENT TO OUR CORE VALUES IS HOW WE DIFFERENTIATE OUR SERVICE

★ Service

We are committed to your needs, right down to every order you place.

We also offer extensive logistical experience providing you with the confidence that your orders will arrive in perfect condition and on time, wherever you may be situated in the world.

★ Teamwork

Our belief in teamwork extends to our customers.

We don't see ourselves as suppliers but as partners, forging strong working relationships built on trust and common goals.

Quite simply, we're an extension of your team - one that you can rely on to deliver on time and on budget.

★ Accountability

We are accountable for our actions and for delivering on the promises we make.

It's what partners do and forms the basis of an enduring relationship.

If we commit to something, we'll deliver on our promise.

★ Results

We recognise that you too must deliver results to your stakeholders.

We work with you to provide the best solutions and service to reach your goals.

We also search the world for new innovations and supply options to assist in further improving your performance.

★ Safety

We are committed to providing our team with a zero-harm working environment.

This also extends to our customers.

We take every action possible to ensure that our products are delivered and installed in a safe and secure manner.

LABORATORY SERVICES

TURN-KEY MINING LABORATORY SOLUTIONS

In conjunction with our manufacturing partners, we provide a complete site laboratory design, fit-out, commissioning, training and support service.



Design

We develop full laboratory designs including 3D modelling for mine site and remote assay laboratories. Choose from an existing ILS design, or our technical services team can custom design a laboratory to meet your specific needs.



Installation & Commissioning

Our skilled technical services team, managed by a dedicated project supervisor, ensures smooth installation and commissioning for timely delivery.



Staff Training

We train your staff in the operation of any new laboratory facility and related equipment, with a focus on safety and efficiency.



Protocol Development

Our experienced chemists provide generic preparation and assay methods which can be modified to suit individual mineralogy requirements. We also develop Standard Operating Procedures (SOPs) for laboratory functions and equipment, including maintenance procedures for all laboratory equipment.



QA/QC Procedures & Implementation

Reproducibility and the transparency of data from a laboratory to its clients is a main requirement of any site laboratory. Our QA/QC templates cover all site assay methods that encompass internal and external laboratory data control and the subsequent routine reporting of the QA/QC system.



Laboratory Support

Where lab resources are limited, we can provide qualified and experienced mining chemists to your site on a short-term or locum basis.



Laboratory Reviews & Audits

Our fully independent laboratory reviews or audits are undertaken by our experienced chemists for either an entire laboratory operation or a single preparation or assay stage. The process is systems-based and a formal written report with data and recommendations is provided.



Laboratory Budgeting & Cost Analysis

Our planning service assists in formulating budgets and operational cost analyses. These offer a valuable tool for geology and metallurgy departments, enabling the streamlining of production in accordance with financial and resource parameters.

SELECT PROJECT EXPERIENCE

GLOBAL COMPETENCY

We have provided complete laboratory solutions to mining projects around Australia and internationally.



Commercial Preparation Laboratory, Kalgoorlie

Design, manufacture, supply, installation and commissioning of high throughput facility.



Minesite Laboratory, Burkina Faso

Design, manufacture, supply, installation and commissioning of complete facility solution including sample prep, fire assay, wet lab and met lab.



Minesite Laboratory, Gross Gold Mine, Russia

Design, manufacture, supply, installation, commissioning and training of complete facility solution including sample prep, fire assay, wet lab and met lab.



Port Laboratory Facility, Guinea

Design, manufacture, supply, installation and commissioning of lab for bauxite handling.



Minesite Laboratory Facility, Guinea

Design, manufacture, supply, installation and commissioning of lab for bauxite handling and transport.



Minesite Laboratory Facility, Ivory Coast

Design, supply, installation and commissioning of complete facility solution including sample prep, fire assay, met lab and environmental.

LABORATORY CONSUMABLES

LEADING BRANDS, EFFICIENT SERVICE, SAFE PACKING AND SHIPPING



Chemicals & Reagents

- Acids
- ICP & AAS standards
- Buffer solutions
- All dry chemicals



Safety

- General products
- Hand protection
- Heat protection
- Protective clothing



Instruments & Instrumentation

ILS can assist you in finding solutions to your instrumentation needs. We carry a wide range of spectrophotometry solutions including:

- AAS
- ICP
- UV VIS

We also supply sulphur and carbon analysers.



Fire Assay Products

- Crucibles
- Fusion, cupellation & ashing furnaces
- Cupels
- Flux
- Fume extraction systems
- Furnace hoods
- Multi pour systems
- Complete range of spares & consumables



Laboratory Equipment & Consumables

- Balances-scales
- Drying ovens
- Drying trays
- Fume cupboards
- Hotplates
- Labware including an extensive range of glassware
- Test tube racks
- Water purification



Geology Products

- Calico bags
- Core saw cutters
- Field scales
- Geological instrumentation
- Hardware & field tools
- Plastic bags
- Sample boxes
- Sample packets
- Sieves
- Complete range of spares & consumables



Metallurgical Products

- Ball & rod mills
- Bond index ball & rod mills
- Bottle rollers
- Calcining ovens
- Filter cloths & papers
- Flotation test cells
- Marcy scales & buckets
- Meters
- Particle size analysers
- Pressure filters
- Sieve shakers
- Vibratory feeders



Sample Preparation Equipment

- Pulverising mills
- Air compressors & fittings
- Drying ovens
- Dust collection systems
- Jaw crushers
- Plastic bags
- Pulverising bowls
- Roll crushers
- Sample boxes
- Sample packets
- Riffle/Sample splitters
- Benching, fixed
- Workstations
- Complete range of spares & consumables



Reference & Certified Reference Material

- Wide ranging standards and CRMs are available for exploration and drilling programmes, laboratory method monitoring and laboratory method set-up and calibration





All products comply with Australian & NZ Standards unless otherwise stated.



Licensed for the handling and storage of specific hazardous goods and or prohibited substances.



Compliant with AS/NZS 4801:2001 Occupational health and safety management systems.



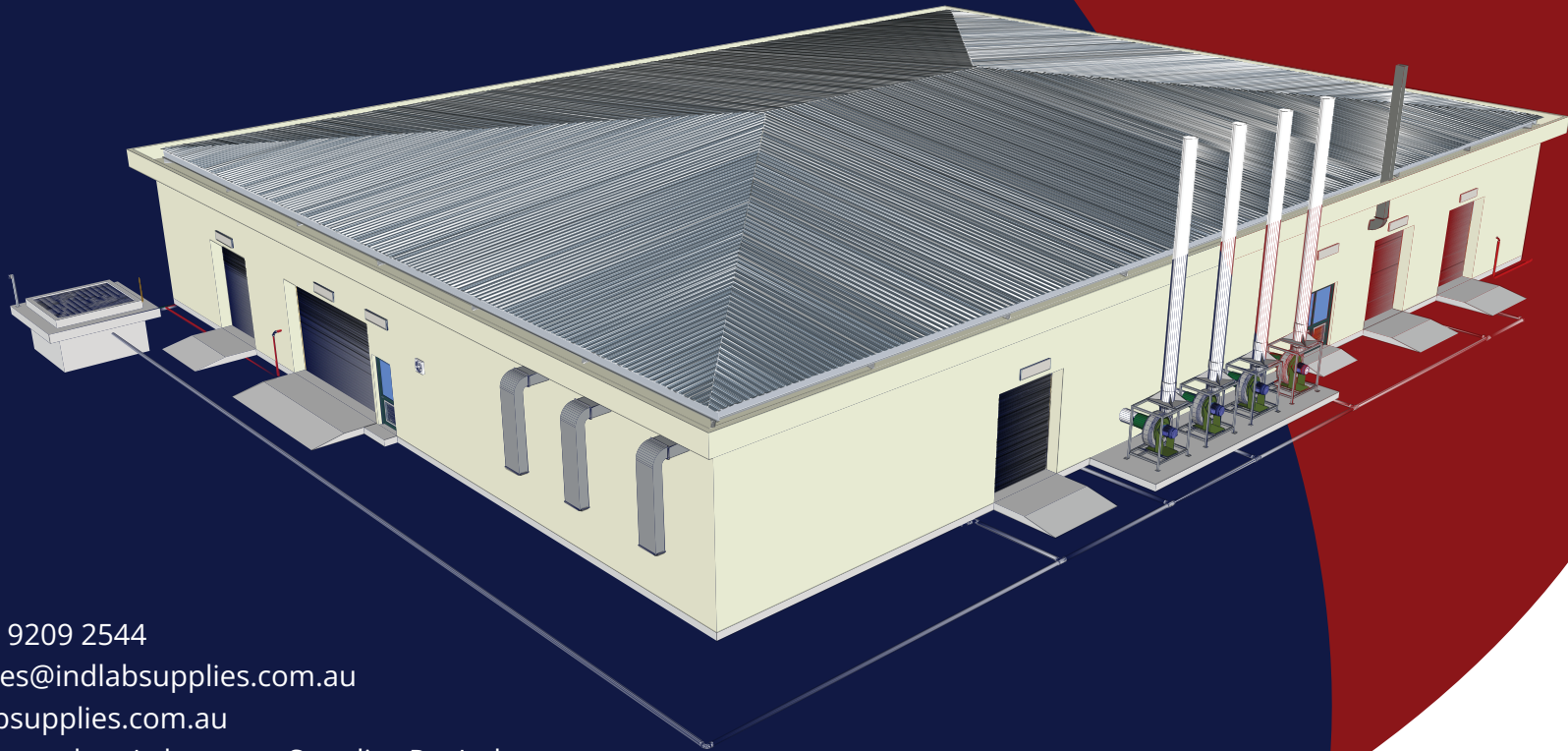
ISO 9001:2015 quality systems accredited.

Independent Laboratory Supplies

ABN 69 117 824 727

1 Darlot Road
Landsdale WA 6065

PO Box 1735
Malaga WA 6944



- +61 8 9209 2544
- ils.sales@indlabsupplies.com.au
- indlabsupplies.com.au
- [@Independent Laboratory Supplies Pty Ltd](#)